



The Oxford School of Drama

Spring 2018 news



It's been a busy start to 2018

Claire Foy was nominated for both a Golden Globe and Screen Actors' Guild award for the 2nd year running for *The Crown* and is busy filming *The Girl With the Dragon Tattoo* sequel; **Babou Ceesay** is filming the 3rd season of the US TV series *Into the Badlands*; **Sophie Cookson** is filming *Red Joan* directed by Trevor Nunn with Judi Dench; **Annabel Scholey** plays Amena in Sky's *Britannia* written by Jez Butterworth; **Richard Flood** plays Ford, a regular character in HBO's 8th season of *Shameless*.



Mary Antony makes her screen debut as Mary Churchill, the youngest daughter of Winston Churchill in the acclaimed feature film *The Darkest Hour* which has just been released in cinemas.

The Vault Festival runs from 24 Jan - 18 March in London. It has been hailed as: “a major London festival ... showcasing new and rising talent” [The Independent](#)

The programme includes:

Imogen Comrie in *Strawberry Starburst*

Wildcat Theatre's *The Cat's Mother*

Owen Jenkins in *One Duck Down*

Arthur McBain in *Nest*

Gemma Barnett in *A Hundred Words for Snow*



Andrew Gower and **Kiran Sonia Sawar** star in the cult Netflix series *Black Mirror* episode, *Crocodile*, alongside Andrea Riseborough. *Black Mirror* is a British sci fi series which explores the possible consequences of new technologies.





Samantha Colley plays opposite Antonio Banderas in National Geographic's series *Genius* about the life of Pablo Picasso. Samantha plays Dora Maar, the French photographer and painter who was also Picasso's lover and muse.

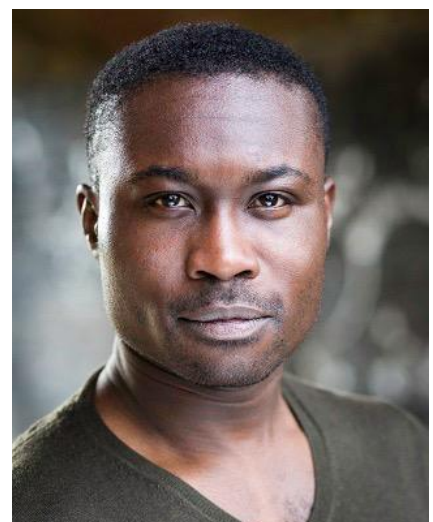
Louise Marwood concludes her eight year stint on ITV's *Emmerdale* as Chrissie White in spectacular fashion with a fatal car crash.

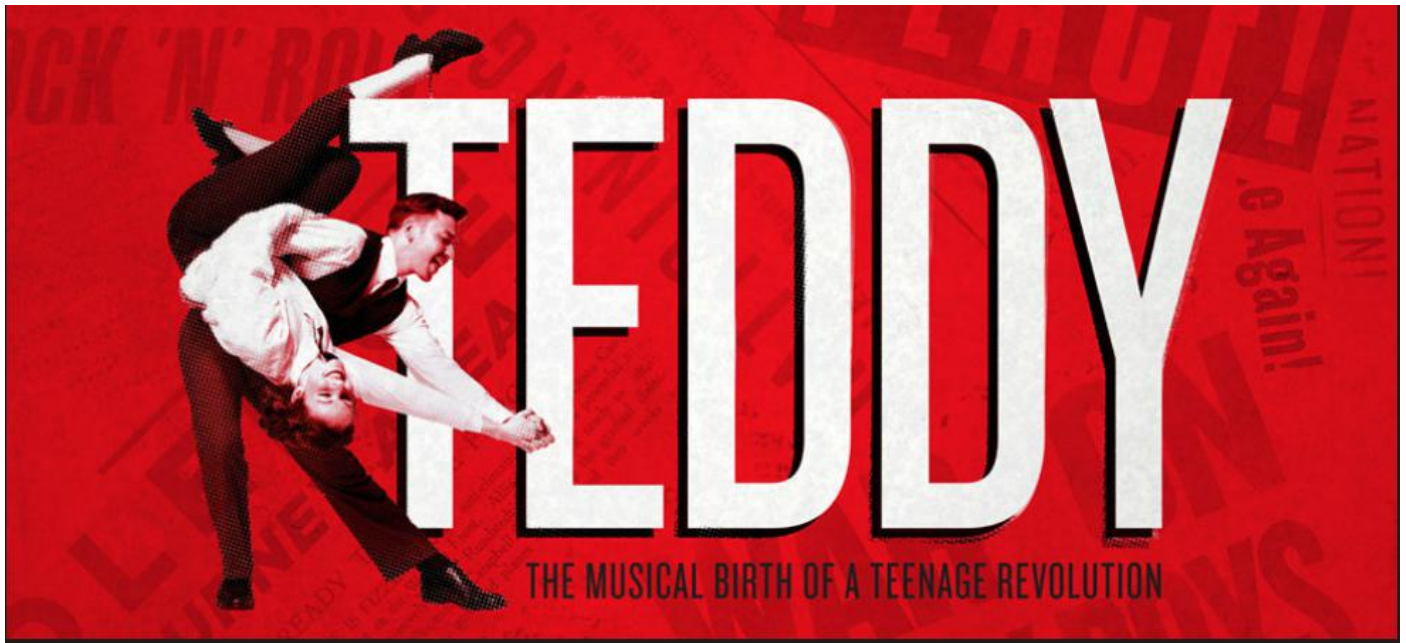


Tom Padley and **Paul Dodds** are in rehearsal with the Royal Shakespeare Company for the productions of *Macbeth* and *Romeo and Juliet* which open in Stratford later in the Spring.

Jude Owusu leads the ensemble as Lopakhin in former RSC Artistic Director Michael Boyd's eagerly anticipated production of *The Cherry Orchard* at Bristol Old Vic which opens on 1 March.

The production is co-produced with Manchester Royal Exchange and transfers to Manchester from 19 April - 19 May.





Molly Chesworth stars in *Teddy* which runs at the Watermill Theatre in Newbury from 11 January until 10 February and then tours to Salford, Bury St Edmunds, Southampton, Chesterfield, Ipswich and London.



Emily Hughes (top) and **Zelina Rebeiro** (bottom right) return to the Liverpool Everyman and Playhouse for the second repertory season. They were part of the ground-breaking rep company last year for which Emily was nominated for a Best Newcomer award by [The Stage](#).

Victoria Blunt opens in the West End as Mrs Cowper Cowper in *Lady Windermere's Fan* at the Vaudeville Theatre.





Catherine Steadman stars as Romaine Vole in the highly acclaimed site specific production of Agatha Christie's *Witness for the Prosecution* performed in London County Hall which runs until September 2018.



Ella Road's debut play, *The Phlebotomist*, plays at Hampstead Theatre later in the Spring.

Tanya Reynolds had a guest role in the first episode of the new series of *Death in Paradise*.

Tanya can also be seen in Sky's *Delicious* playing Dawn French's troubled daughter, Teresa.



